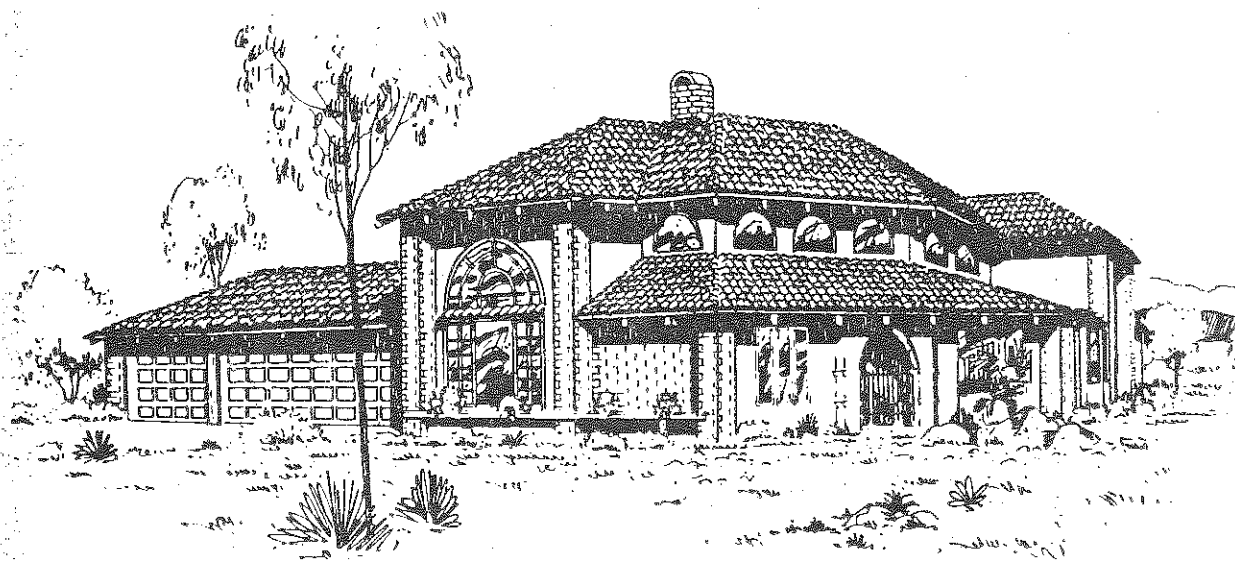


house of the week



House plan can make a splash

A statement in tile, adobe brick and stucco, this Spanish-style Turquoise 3 is actually a 72-foot square that surrounds an outdoor swimming pool, wading pool and spa — the centerpiece of a lifestyle geared toward the open air.

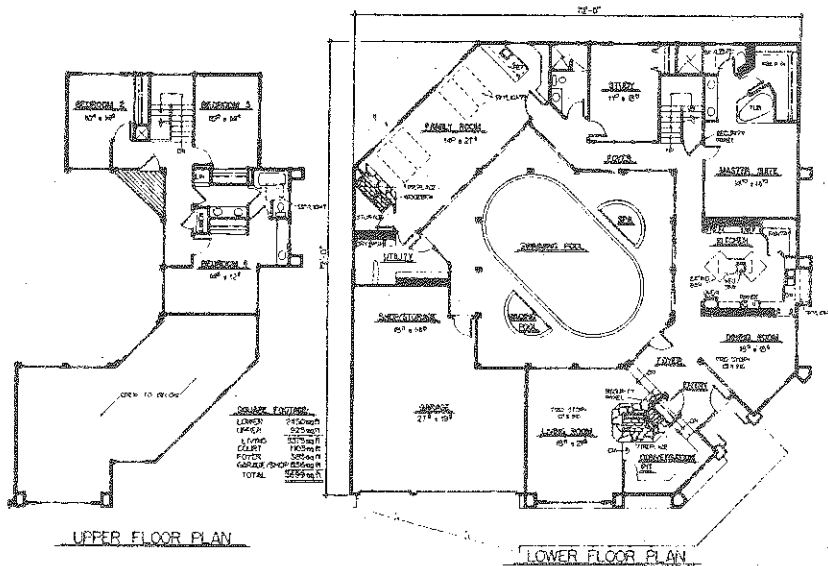
Wrought-iron gates lead to the arched, double-doored entry, where the ceiling soars to 16 feet and is open to the second story.

Contrasting the airiness of the entry is a sunken conversation pit with a built-in couch that cozies up to a homey fireplace. For more formal encounters is the adjoining living room, brilliantly lit by both an oversized window and plenty of glass facing the inner court.

Two steps lead up to a foyer that skirts the courtyard and provides access and a view of every room on the main floor.

The roomy dining room gets added spaciousness from its two-story ceiling. Placed into a corner arrangement, it gives the impression of being set apart, but it's actually only steps away from cooking and cleaning areas.

A corner that might normally be wasted serves as the kitchen's step-in pantry. Equipped with more than just the expected conveniences, the kitchen is designed for maximum function with minimum steps surrounding a food preparation center with a vegetable sink and an eating bar for casual dining.



in closet and a skylight. It has a long vanity with double sinks and an oversized tub.

Around a corner from the foyer is the study, which can double as a room for overnight guests. The bath's convenience to the courtyard also makes it a natural changing room.

Turn one more corner and a large family room seems to invite activity, with two pairs of skylights, a wet bar with sink, a refrigerator and a fireplace. A storage closet behind the fireplace is the perfect spot for stowing games, crafts and card tables.

The utility room next door features a built-in ironing board and enough counter space to house a fluff 'n' fold business.

The remaining three of the home's four bedrooms are found upstairs, all of which have access to a corner balcony overlooking the

and bedroom four has its own sink, vanity and private access to the large, shared bathroom, which has a skylight of its own.

Designed with heavy traffic in mind, the bath has linen closets, both inside and outside the main door, double sinks and privacy door between the vanity and water closet.

The 2½-car garage has ample shop and storage space.

For a study plan of the Turquoise 3 (226-03), send \$3 to:

LANDMARK DESIGNS
P.O. Box 2832
Eugene, Ore. 97402

Be sure to specify the plan name and number when ordering. Give the design number, your name and complete home address with ZIP code. Designers, Architects and readers with plans they would like